

4WNA & 4WFA Truck-Mount Winches

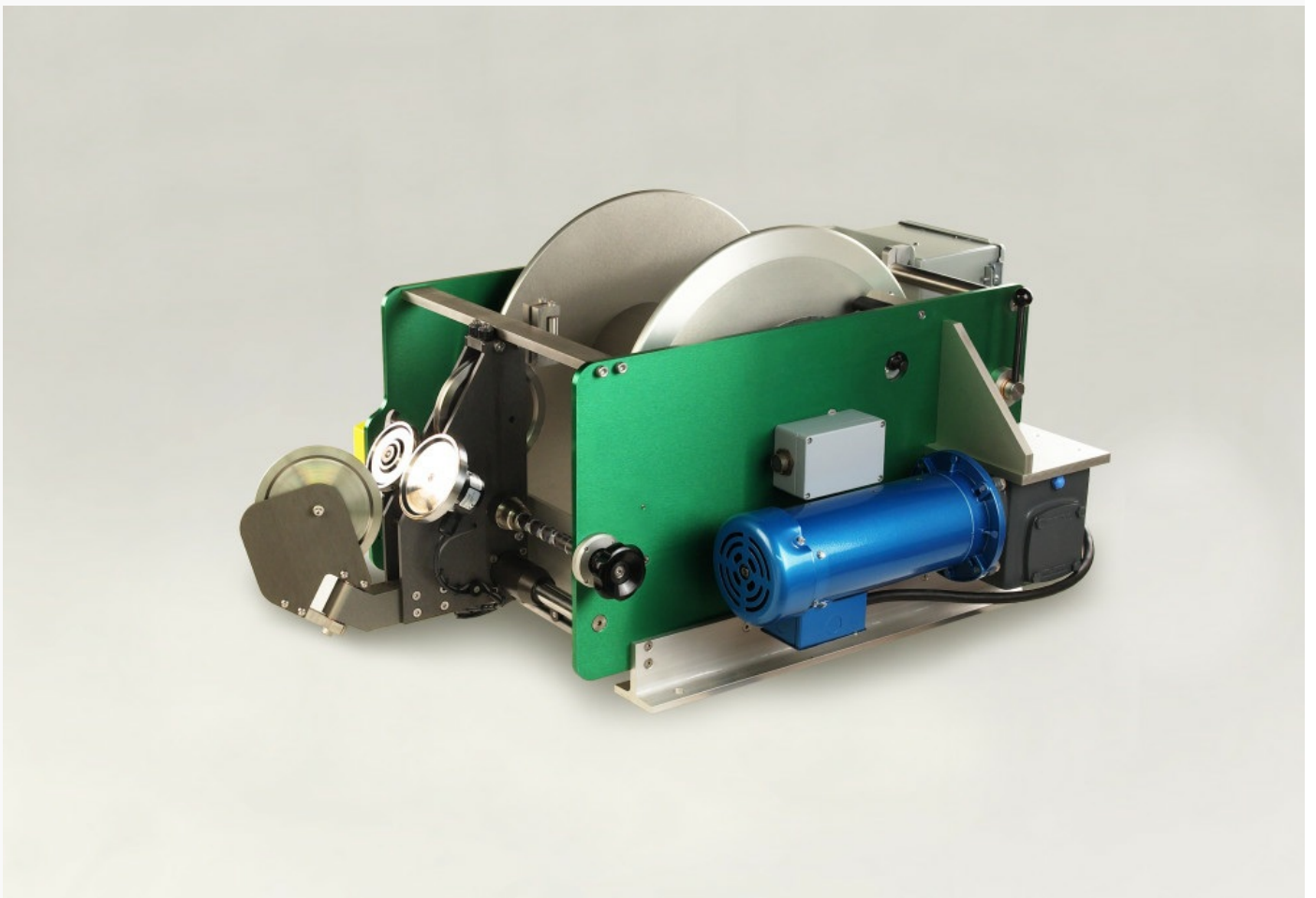
Description

Mount Sopris **4WNA** and **4WFA Truck-Mounted Winches** are rugged, field-tested logging hoists capable of positioning a geophysical probe or other tool in a borehole. They are designed to be mounted to a truck and can haul equipment loads **up to 272 kg** (600 lbs) at rates between **0 and 90 m/min** (0 to 300 ft/min). These winches are optimal for boreholes between **1000 and 1800 meters** (3280 ft to 5900 ft) in depth and support a wide variety of cable types.

Features & Benefits

- 4WNA includes a 1HP motor, 4WFA includes a 2HP motor
- High precision measuring wheel and depth encoder
- Cable is automatically wrapped on the drum in even layers through the level wind mechanism
- Tension display and load cell with digital depth measuring system
- Includes cablehead, remote control, disc brake, and 2 speed drive.
- Equipped with slip rings and connectors, through which surface instrumentation can communicate with the probe
- Motor is controlled by a motor speed controller, which allows the user to vary the logging speed





4WFA Winch with 2HP Motor

The 4WNA/4WFA Winches and Winch Control are designed for use with Mount Sopris logging consoles and a field laptop to achieve a complete logging system. These winches can also be mounted on skids for remote access applications or within [custom designed logging vehicles](#).

[Contact Us](#) for information about using our truck-mounted winches for your project.



3WCA Winch Depth-Tension- Speed Controller

Technical Specifications

Motor: 1 or 2 HP, SCR type

Controller: SCR controller, with 10 Amp current limit

Depth Encoder: BEI Model H20 (200 pulses/turn) standard, others available.

Wireline Tolerance: Supports Single Conductor, Coaxial, and Multi-Conductor Cables

Winch Size: 114 x 52 x 66 cm (45" x 20.25" x 26")

Winch Weight without Cable: 110 kg (242 lbs)

Cable off-axis Tolerance: 20° left, 20° right, 15° down, 90° up



4WNA Winch and Probes

4WNA	Max Speed	Max Continuous Load	Max Instantaneous Load
Low Speed	9 m/min (30 ft/min)	272 kg (600 lbs)	363 kg (800 lbs)
High Speed	27 m/min (90 ft/min)	113 kg (250 lbs)	136 kg (300 lbs)

4WFA	Max Speed	Max Continuous Load	Max Instantaneous Load
Low Speed	30 m/min (100 ft/min)	272 kg (600 lbs)	363 kg (800 lbs)
High Speed	90 m/min (300 ft/min)	113 kg (250 lbs)	136 kg (300 lbs)

Temperature: -20 to 50 Deg. C

Approximate Shipping Weight:

* 1000 m (3281 ft) of 3/16" (4.76 mm) cable: 324 kg (715 lbs)

* 1800 m (5905 ft) of 3/16" (4.76 mm) cable: 340 kg (750 lbs)

Shipping Dimensions: 117 x 72 x 74 cm (46" x 28.5" x 29.25")



Logging with Truck-Mounted Winch